



Hunger Wall Residence



Hunger Wall is a newly opened elegant residence with complete service, ready to provide full comfort to a demanding clientele. The early 20th century (1903) building underwent a complete renovation with the preservation of elements of secessionist architecture. A historical gem is situated in the courtyard of the building – a fragment of the Hunger Wall that was built in 1360 – 1362, during the period of the reign of Charles IV. Inside, the building houses 18 stylish, cozy and richly furnished apartments, each with individual design.

The residence is situated in the historical part of Prague - in the Malá Strana, near the Vltava River and two magnificent parks, Petřín and Kampa, which are very popular among the citizens of Prague. It thus offers peace and quiet right in the heart of the city, near the Old Town, Charles Bridge and Prague Castle. In addition to important Prague landmarks and parks, a number of diverse small cafés, bars and restaurants with a distinctive atmosphere are located in the immediate vicinity of the residence. The modern Anděl City and Nový Smíchov shopping center are also easily accessible.

Thanks to its superb location, level of service and furnishing of the interior, the residence is a suitable place for both long-term as well as short-term business or tourist stays. In addition to the advantages and services offered by classical hotels, it concurrently offers much more space, necessary privacy, peace from the pulsating city and a guarantee of safety.



Decorative pattern Apartments Decorative pattern

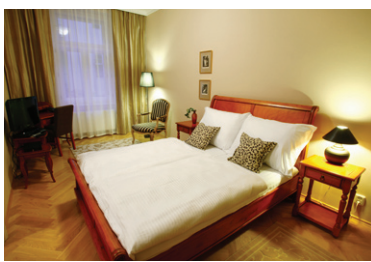
The Hunger Wall residence offers accommodations in 18 stylishly furnished apartments that feature a pleasant atmosphere full of comfort. The spacious apartments offer a completely furnished bedroom, working corner and a living room with a kitchen unit.

- 8 x Junior Suite (approximately 45 m²)
- 8 x Superior Suite (approximately 55 m²)
- 2 x Executive Suite (approximately 90 m²)

The apartments are non-smoking; smoking is possible in designated places. The building is equipped with an elevator.

Decorative pattern Hunger Wall Decorative pattern

Hunger Wall, sometimes also called With Teeth or Bread-like wall, is a masonry wall on the Prague Petřín Hill, which was commissioned during 1360 - 1362 by the Czech king Charles IV, in order to strengthen the city fortification of the Prague Castle and Lesser Quarter against attack from the West and South. Originally it was approximately 4–4.5 m tall and 1.8 m wide. In the upper part it was equipped with battlements, galleries, loopholes and several (reportedly) eight advanced towers (bastions). It extended from Újezd all the way to Strahov and behind it to Hradčany.



Apartment Facilities



- connection points to high-speed Internet
- Wi-Fi coverage
- direct telephone line
- 23" LCD TV screen/ monitor
- satellite receiver (Astra and HotBird satellites)
- CD/DVD/MP3 player, USB port
- entry via chip card
- electronic safe
- refrigerator
- induction cooking stove
- microwave oven with grill
- completely equipped kitchen - dishes
- bathtub (+ shower bath in Executive Suites)
- washing machine
- clothes dryer
- floor heating in bathroom
- dishwasher in selected apartments
- individual thermal regulation
- air-conditioning in attic apartments
- electronic safety and fire-stopping system



Residence Services



- reception – open 9 a.m. to 6 p.m. on working days.
- housekeeper / security guard in the house
- 24/7 assistance services on the phone line (GSM): +420 733 687 848
- connection to the Internet (Wi-Fi or via landline)
- cleaning (daily cleaning, change of towels according to need, change of bedclothes once per week)
- security cameras
- fitness studio
- meeting lounge
- luggage room
- children's beds and chairs available upon request
- delivery of daily newspapers
- possibility of borrowing an iron and ironing board
- arranging of washing and ironing
- hairdryer available upon request
- photocopies, scanning, printing

Based on agreement, we would be happy to secure additional services related to a business or holiday stay at our residence.



Meeting Lounge



There is a lounge for up to 12 people at the residence for work or social meetings.

Equipment:

- Wi-Fi
- data points with high-speed internet
- data projector
- flipchart
- notebook available upon request
- possibilities of refreshments

The lounge is available free of charge for the residents.



Location



The Hunger Wall residence is situated on the western bank of the Vltava, in one of the most romantic and most sought after parts of Prague – the Lesser Quarter. It is situated on a quiet street, near the Charles Bridge and the Old Town. The popular Kampa and Petřín parks are located in the immediate vicinity of the residence.

Touristically interesting places, as well as diverse Prague restaurants, little cafés, bars and the Anděl shopping center are easily accessible on foot or via the tram – the Újezd stop (lines 6, 9, 12, 20, 22, 23, 57, 58, 59) is approximately 50 meters from the residence. Easily accessible are also stations on the subway B line – the Národní station (2 stops), the Anděl station (3 stops). The Ruzyně airport is 13 km away.



Distances

- Praha Ruzyně Airport - 13 km
- Wilson Train Station - 2,5 km
- Prague Castle - 1 km
- Charles Bridge - 0,8 km
- Old Town Square - 2 km
- Wenceslas Square - 1,5 km
- National Theatre - 0,3 km
- Metro B line stations Anděl a Národní - 0,5 km

Payment notice

All rooms must be guaranteed with a credit card. Accepted Credit Cards: American Express, Diners Club, JCB International, MasterCard, VISA.



Hunger Wall Residence

Plaská 8, 150 00 Praha 5 - Malá Strana, Česká republika

Tel.: (+420) 257 404 040 / GSM: (+420) 733 687 848 / Fax: (+420) 257 404 060
www.hungerwall.eu / info@hungerwall.eu / www.prague-apartment-rentals.eu



HUNGER WALL
RESIDENCE